

NOVALOK

ADVANCING INNOVATION

ECONOMICALLY DESIGNED TO
INCREASE STORAGE

Build it up higher and make more use
of your factory's cubic capacity.



Raised Platforms.

*Specialists in platform racking
and storage in New Zealand.*

Known as an intermediate floor. Platforms or raised storage areas allow for an economic increase of the storage area available. Platform areas can be self supported by its own structure or by the shelving or racking below.

Main components of raised storage systems:

Raised storage systems have separate flooring above the main racking. Floors are of high strength Triboard or Steelwalk plank decking. Often mesh flooring is used for the walking area to allow light through to the lower level.

Raised storage areas are a fully bolt together construction, so is easily disassembled for relocation or extension. This additional platform can be used for a storage area, process work, or light manufacturing.



What about compliance? Will a building consent be required for the installation of my mezzanine platform?

There are a few mitigating factors to review to answer this. Best course of action is to get in touch with us to arrange a site scope. We have a team of trained specialists who will scope your facility and work through a compliance checklist with you. This will determine the best way to approach your installation.



NOVALOK

ADVANCING INNOVATION



Raised Platforms.

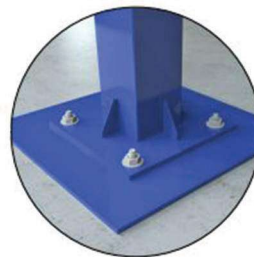
Platform floors are usually custom built to the customer's requirement. This unit is wholly supported by its own structure giving usable space for a variety of operations on the lower floor.

The support shelving often extends to the full height, and the platform floor is really no more than a 'cat walk' to give access to the higher level shelving.

Build it up higher and make more use of your factory's cubic capacity. Raised storage is a real money spinner, we know you will find a storage solution from Novalok that will increase your cash flow and profits.

Other Benefits:

- Double your floor area storage space
- Make full use of available stud height
- Ideal for small parts storage
- Each storage system is self supporting
- Fully modular and can be expanded at any time
- Great ROI value because you are obtaining more effective floor area



500 x 500 x 10mm
Foot Plate detail.

